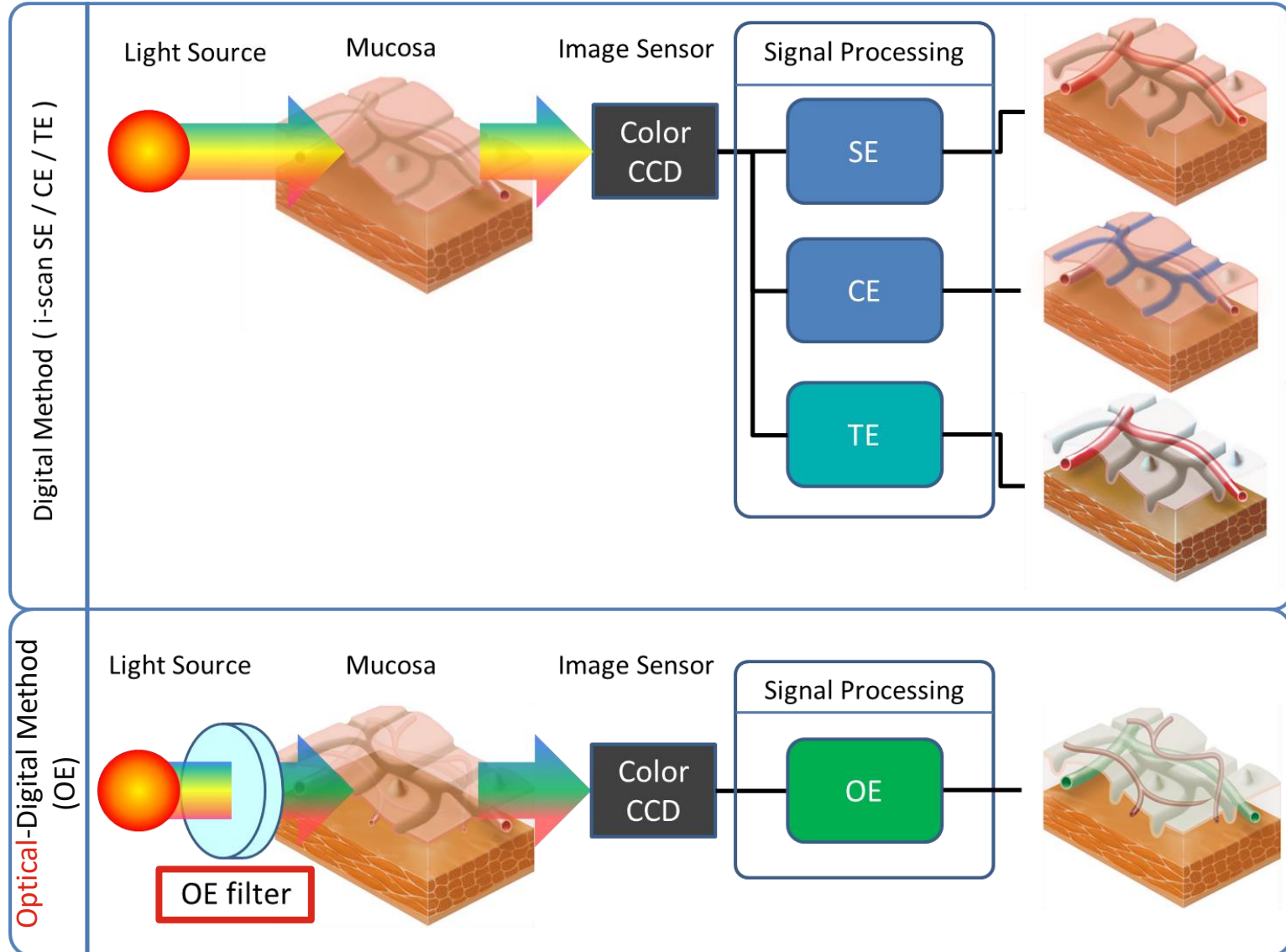


i-scan & OE



Image Enhancement Technology



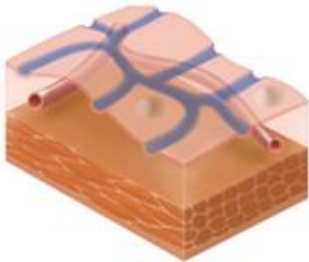
i-scan imaging

Surface Enhancement (SE)



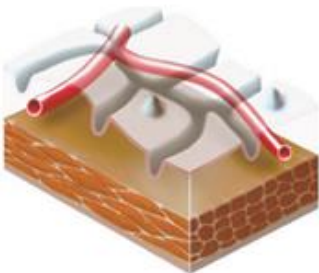
Enhance the edges of anatomical structures
=> surface structure, tissue folds, blood vessels

Contrast Enhancement (CE)



Visualize dark area by adding slight blue tone
=> mucosa surface texture

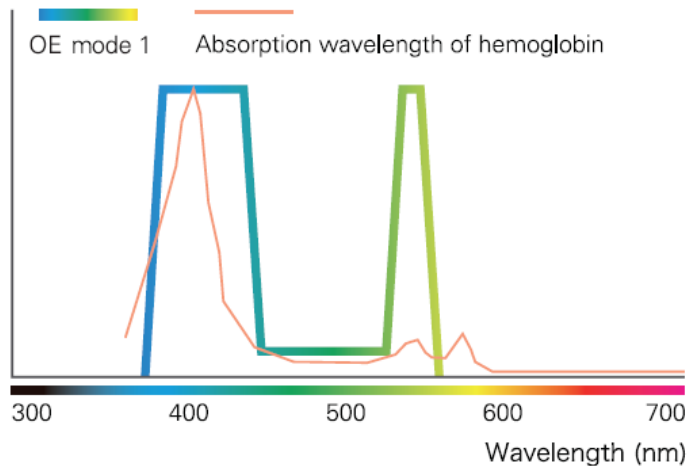
Tone Enhancement (TE)



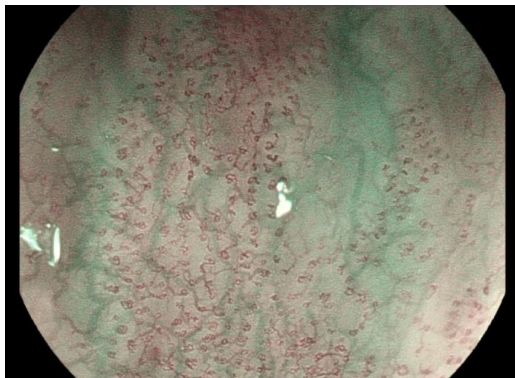
Adjust color contrast in the image
=> mucosal patterns, vascular structures

Optical Enhancement

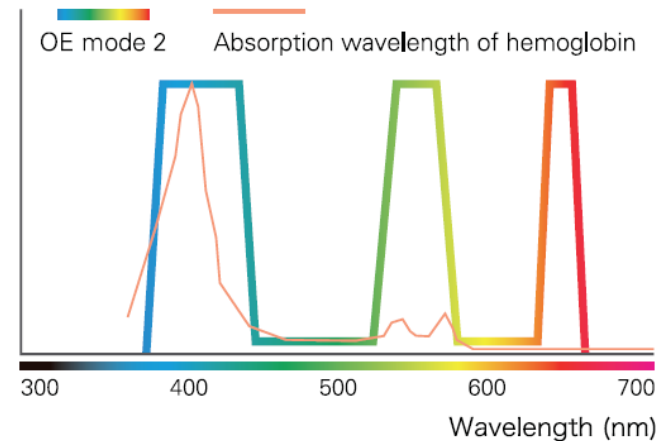
OE Mode1



Emphasize blood vessels by using two large absorption wavelength of hemoglobin



OE Mode2



Obtain improved contrast images which is brighter and closer to natural, white-light color by using 3 peak wavelengths: long-wavelength and Mode 1 wavelengths



Optical Enhancement



Standard white-light image
Almost missed a flat colonic lesion



**Mode1 assisted in characterizing
the mucosal, vascular pattern
and margins of the lesion**

i-scan settings

■ Default image enhancement settings

Setting Items	Mode	Setting Value					
		i-scan1	i-scan2	i-scan3	i-scan Off	OE Mode1	OE Mode2
Enhancement (Enh)		+2	+2	+2	+4	+4	+4
SE (Surface Enhancement)		+5	+5	+5	Off	Off	Off
CE (Contrast Enhancement)		+2	+2	+2	Off	Off	Off
TE (Tone Enhancement)		Off	c	g	Off	Off	Off
Brightness (B)		0	+2	+1	0	0	0
Ave / Peak (Light Measuring Method)		Ave	Ave	Ave	Ave	Ave	Ave
Red (Color Balance)		-1	0	0	0	0	0
Blue (Color Balance)		0	0	0	0	0	0
Noise Reduction (NR)		Off	Off	Off	Off	Off	Off