

海外営業部長

家崎 淳子

〒112-0004 東京都文京区後楽1-4-14  
TEL (03)3816-3562 FAX(03)3816-3582  
携帯 090-9886-9552  
E-mail: jjesaki@kokenmpc.co.jp  
URL: www.kokenmpc.co.jp



# Endoscopy Training Series

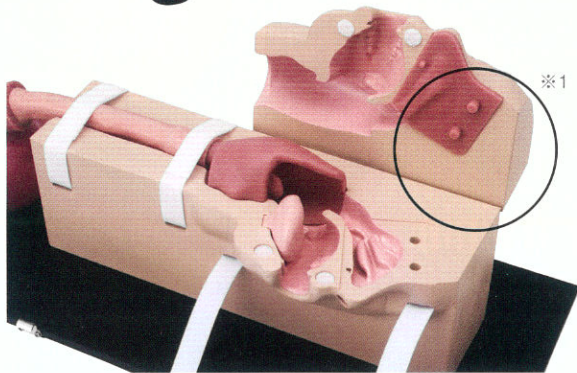
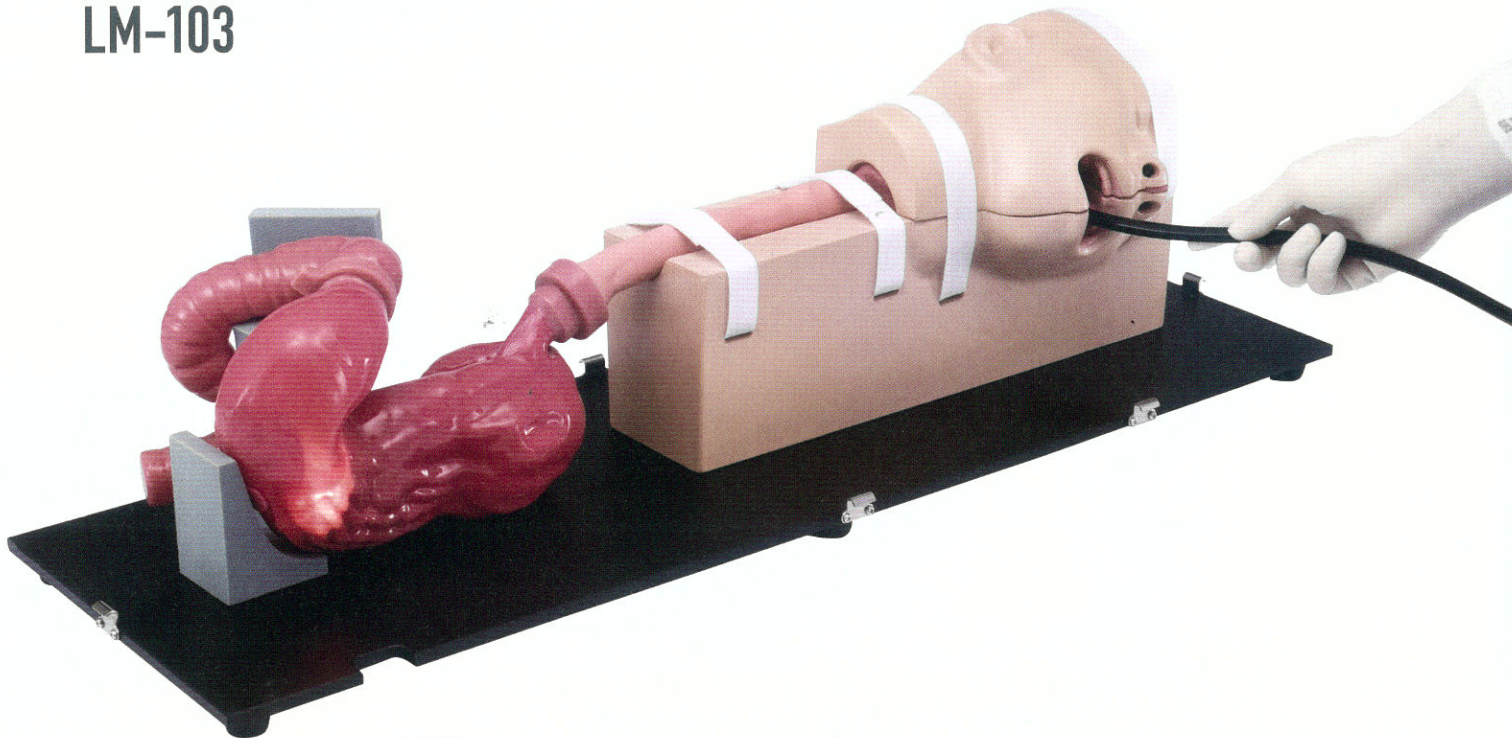




# EGD (EsophagoGastroDuodenoscopy) Simulator

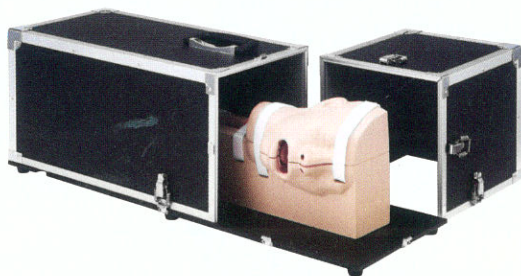
This product is a simulator in which an endoscope can be inserted into the upper gastrointestinal tract to perform examination. Both transoral and transnasal insertion are available, and as an accessory, recreation of an ulcer and an observational polyp is included.

## LM-103



The face portion can be opened at the midline to understand the anatomical structure of the nasal and oral cavities and the larynx.

※1 When using the nasal septum section (left side), it is possible to simulate patients for whom left side insertion of the endoscope is difficult.



The dedicated box for packaging can be divided into 2 parts, and it can be used to only cover the stomach side.

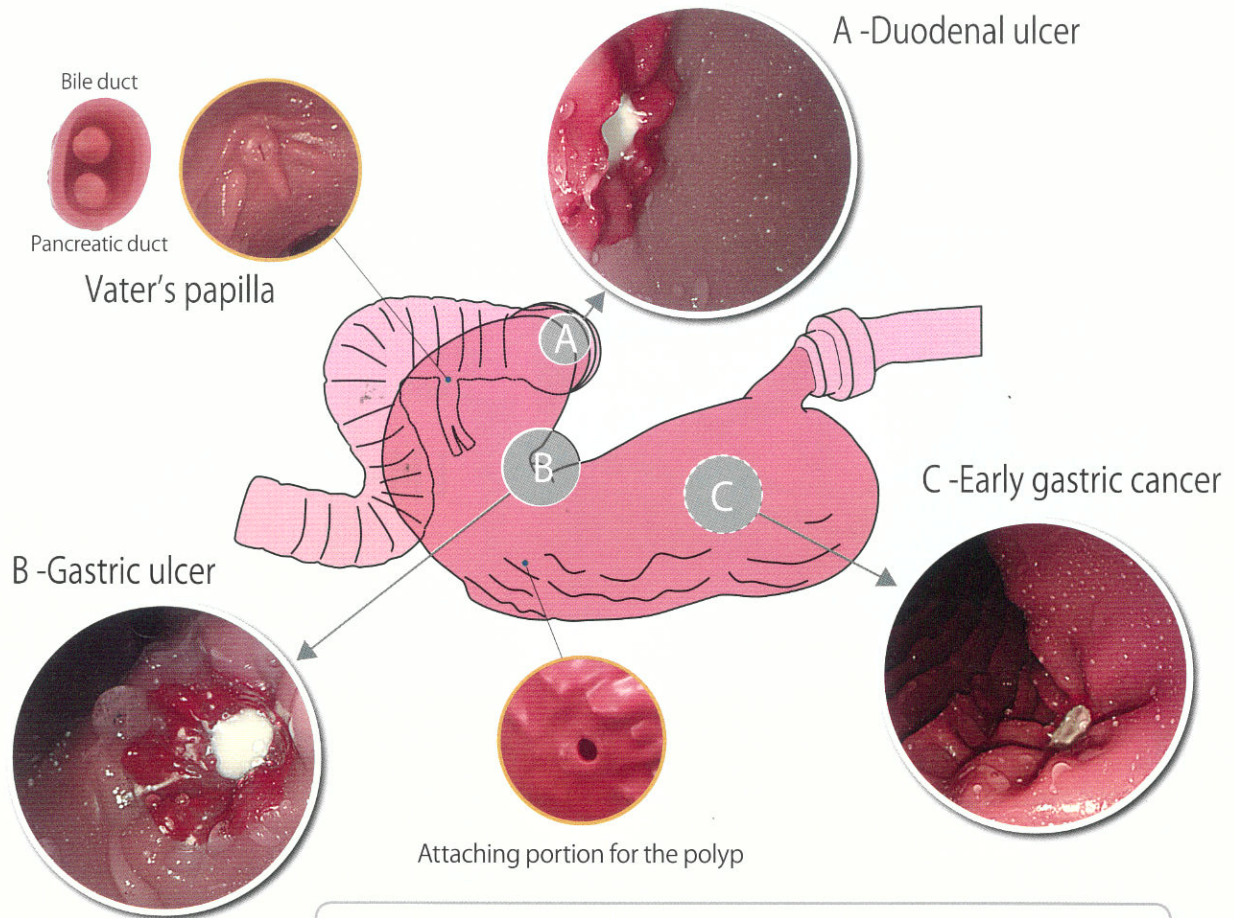
When not covered by the case, trainees can externally view the position of the endoscope as they insert it into the body.

When covered by the case, training can be conducted under the same conditions as for insertion into actual patients.

## Features

1. Specialized silicone rubber is used as the material, and inserting the endoscope feels like inserting it into an actual human body. The color inside is also close to that of the human body.
2. Since the oral and nasal cavities have been reproduced, both transoral and transnasal insertion can be practiced.
3. For the transnasal insertion, the difficulty setting of insertion can be changed by placing the nasal septum pieces to deviate to the right or the left side. The insertion technique and visibility can be changed.
4. Practicing endoscopic examination of the esophagus, stomach, and duodenum is possible. It is also possible to practice cannulation of the papilla during endoscopic retrograde cholangiopancreatography (ERCP).
5. Gastric ulcers and early gastric cancer can be observed in the stomach. Four types of polyps of Yamada classification types I to IV can also be attached for observation.
6. As a separately sold option, a polyp can be attached to practice polyp resection and control of bleeding from it. After resecting it, one can practice the clipping method to stop the bleeding.
7. An ulcer is reproduced in the duodenum.

# Anatomical sites and lesions



**Observational polyp**  
Yamada classification types I to IV

Type I    Type II    Type III    Type IV

Option

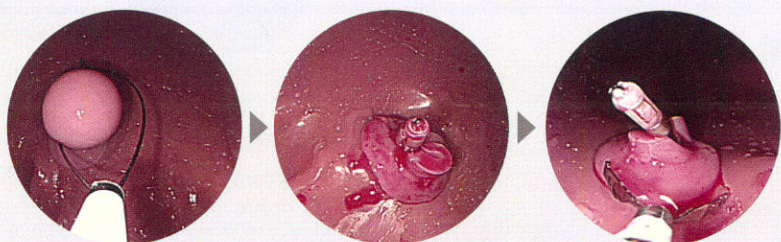


- Polyps can be resected with an electrical scalpel, and it will bleed.
- Techniques to stop bleeding using a clipping method are possible.
- The type of the polyp is Yamada classification type IV.

\*The disposable return electrode is not included.  
\*Always store the simulated polyp (for polypectomy) in the refrigerator (2°C to 10°C, do not freeze).

**Simulated Polyp**  
(for polypectomy) 5count

**LM-103A**  
Keep refrigerated.





# Colonoscopy (Lower GI Endoscopy) Simulator Type II



The Colonoscopy Simulator is a training model for practicing colonoscopy insertion. By attaching various optional parts, it allows training in endoscopic interventions, such as resecting a polyp and stopping bleeding, and insertion into the small intestine using a balloon enteroscope.

**LM-107**

## Features

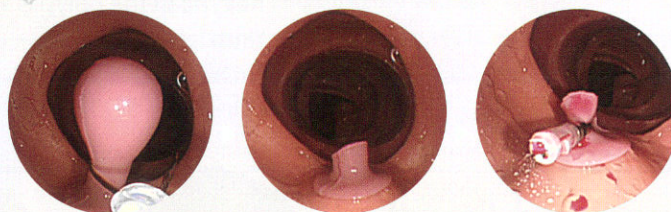
1. The simulator is made of special silicone rubber that feels like a living body in the observation field. The internal color also closely resembles that of the living body.
2. Observation can be performed by attaching a simulated polyp (for observation) in the ascending and descending colons.
3. LST (laterally spreading tumor) is reproduced in the ascending colon.
4. By attaching the optional "simulated polyps (for polypectomy)", training in the endoscopic treatment of polyps, such as snare resection and clipping hemostasis, can be carried out.  
\* Simulated polyps can be attached to the ascending and descending colons.
5. By attaching the optional "small intestine", training in enteroscopic insertion into the small intestine and the shortening technique can be accomplished using double balloon and single balloon endoscopes.

Training in the endoscopic treatment of polyps, such as snare resection and clipping hemostasis, can be carried out.

## Simulated Polyp (for polypectomy) 5count

**LM-103A**

**Keep refrigerated.**



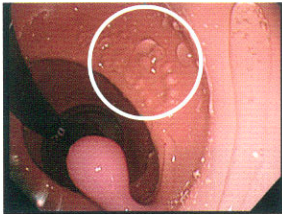
- Polyps can be resected with an electrical scalpel, and it will bleed.
- Techniques to stop bleeding using a clipping method are possible.
- The type of the polyp is Yamada classification type IV.

\*The disposable return electrode is not included.

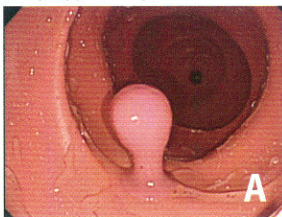
\*Always store the simulated polyp (for polypectomy) in the refrigerator (2°C to 10°C, do not freeze).

# Anatomical sites and lesions

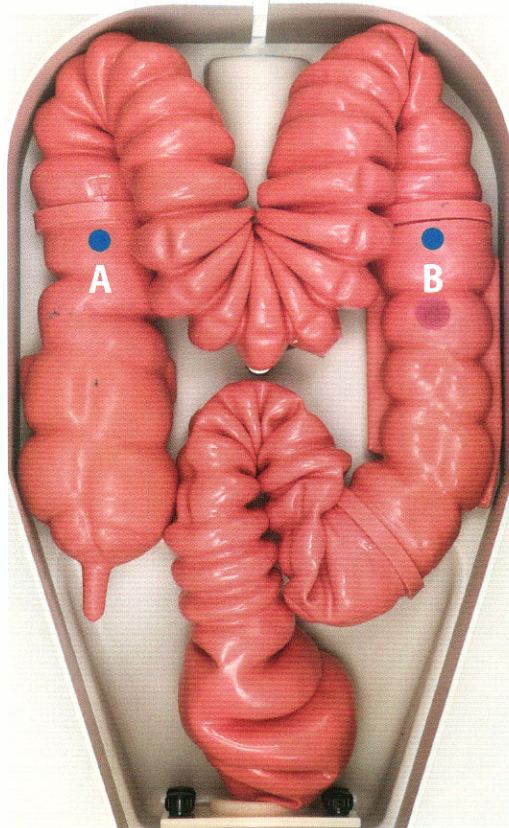
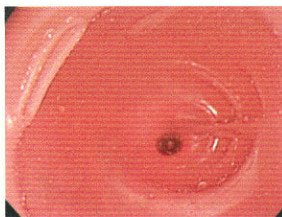
LST (laterally spreading tumor)



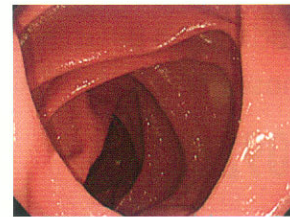
Ascending colon polyp (for polypectomy)



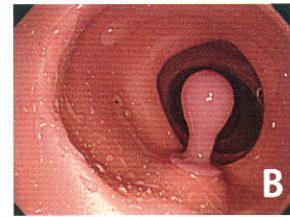
Cecum



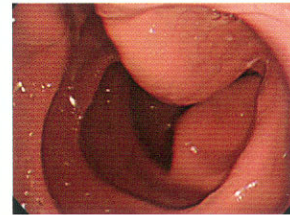
Transverse colon



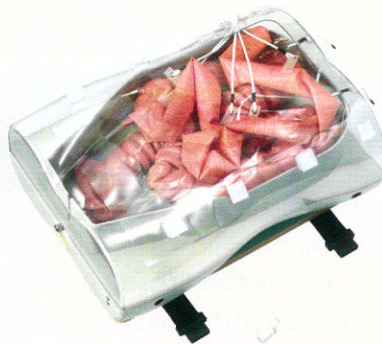
Descending colon polyp (for polypectomy)



Sigmoid colon



Rectum



## Small intestine

Practical training for enteroscopy (balloon enteroscopy) can be performed.

- Practical training for the double balloon method can be performed using a double balloon enteroscope.
- Practical training for the single balloon method can be performed using a single balloon enteroscope.
- Using each type of balloon enteroscopy, insertion into the large and small intestine and shortening technique can be performed.
- The small intestine has a total length of 120 cm and contains an internal scale with intervals of 30 cm to enable the user to confirm the length of insertion.
- The level of difficulty of inserting the enteroscope into the small intestine can be changed. (Two types)

### Small Intestine for Colonoscopy semi-difficult type LM-107A



Components: Small Intestine for Colonoscopy, Sponge for lubricant application, Intestinal sheet, DVD version of Instruction Manual

### Small Intestine for Colonoscopy easy type LM-107B



Components: Small Intestine for Colonoscopy, Sponge for lubricant application, Intestinal sheet, DVD version of Instruction Manual

# List of Components and Specifications

## EGD (EsophagoGastroDuodenoscopy) Simulator LM-103

### Components

| Product name   | Quantity |
|--|----------|
| Stomach  | 1        |
| Half head  | 1        |
| Main head  | 1        |
| Hypopharynx piece  | 1        |
| Esophagus piece  | 1        |
| Duodenum piece   | 1        |
| Nasal septum (deviated to the left)                      | 1        |
| Nasal septum (deviated to the right)                     | 1        |
| Stand  | 1        |
| Observational polyp: Yamada classification types I to IV | 1 set    |
| Conduction cable for simulated polyps (for polypectomy)  | 1        |
| Simulated polyp fixture                                  | 1        |
| Hard case (for the head side)                            | 1        |
| Hard case (for the body side)                            | 1        |

### Specifications

|            |                                |
|------------|--------------------------------|
| Dimensions | Approx.27(L) × 80(W) × 29(H)cm |
| Weight     | Approx.8 kg                    |

## Colonoscopy (Lower GI Endoscopy) Simulator Type II LM-107

### Components

| Product name  | Quantity |
|---|----------|
| Main unit   | 1        |
| Observational polyp                                     | 2 kinds  |
| Conduction cable for simulated polyps (for polypectomy) | 1        |
| Polyp attachment band                                   | 1        |
| Holding table   | 1        |
| Storage case  | 1        |

### Specifications

| Name            | Size                            | Weight        |
|-----------------|---------------------------------|---------------|
| Main model unit | Approx. 33(L) x 46(W) x 21(H)cm | Approx. 2.9kg |
| Holding board   | Approx. 27(L) x 44(W) x 9(H)cm  | Approx. 1.4kg |
| Case            | Approx. 40(L) x 53(W) x 35(H)cm | Approx. 5kg   |

### Replacement parts

| Name                             | Quantity | Product No. |
|----------------------------------|----------|-------------|
| Ascending Colon for Colonoscopy  | 1        | LM-107C     |
| Descending Colon for Colonoscopy | 1        | LM-107D     |
| Conduction cable                 | 1        | LM-107E     |

\*For those who have small and large bowel endoscopy training models (LM-100 Enteroscopy-Colonoscopy Simulator Full Set, LM-100A Enteroscopy-Colonoscopy Simulator Basic Set), purchase of replacement and optional parts (simulated polyps (for polypectomy)) allows training for treatment of polyps in the same manner as Colonoscopy Simulator Type II.

## Bronchoscopy Training Model LM-092

### Components

| Product name      | Quantity |
|-------------------|----------|
| Bronchi main body | 1        |
| Stand             | 1        |
| Storage case      | 1        |

### Specifications

| Name              | Size • Weight                             |
|-------------------|---|
| Bronchi main body | Approx. 25(L) x 24(W) x 16(H)cm           |
| Storage case      | Approx. 30(L) x 32(W) x 27(H)cm           |
| Weight            | Approx. 3kg (including bronchi main body) |

## Ultrasonic Bronchoscopy Simulator LM-099

### Components

| Product name                    | Quantity |
|---------------------------------|----------|
| Bronchi main body               | 1        |
| Storage case (with sponge case) | 1        |
| Head model                      | 1        |
| Puncture site                   | 1        |

### Specifications

| Name  | Size                            | Weight        |
|---|---------------------------------|---------------|
| Bronchi main body   | Approx. 25(L) x 24(W) x 16(H)cm | Approx. 200g  |
| Storage case<br>(including stand, bronchi supporters & sponge case) | Approx. 32(L) x 46(W) x 27(H)cm | Approx. 3.6kg |
| Head model  | Approx. 17(L) x 16(W) x 15(H)cm | Approx. 700g  |
| Puncture site   | Approx. 3(L) x 6(W) x 4(H)cm    | Approx. 100g  |

### Consumable items

| Name          | Quantity | Product No. |
|---------------|----------|-------------|
| Puncture site | 2        | LM-099A     |

### Separately sold options

| Name       | Quantity | Product No. |
|------------|----------|-------------|
| Head model | 1        | LM-099B     |